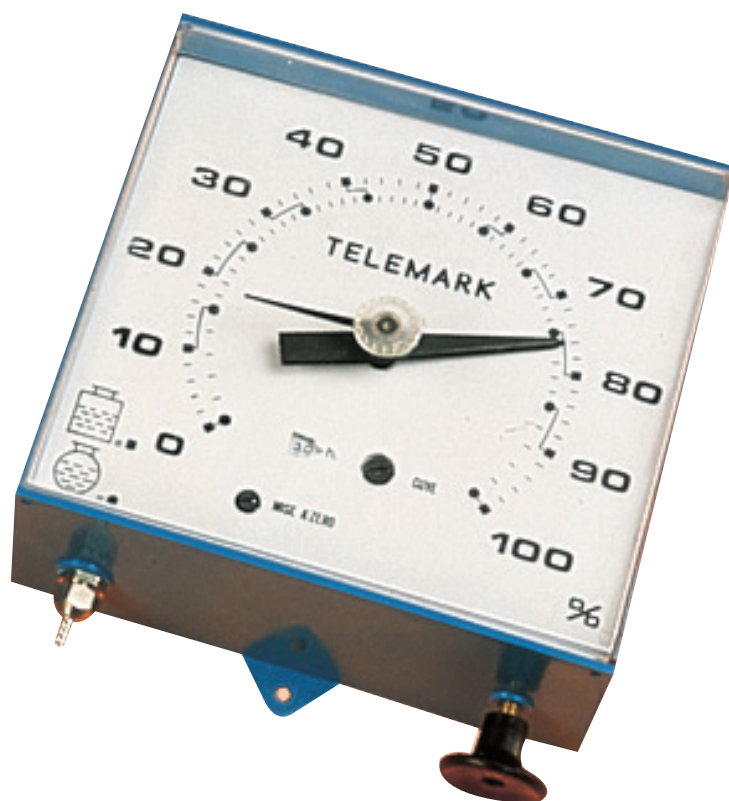


# GAUGES

Accessories

## Technical Data Sheet



## Description

- GAUGE MECAMENSOR : mechanical float gauge, reading in cm from 0 to 200. 1 1/2" connection.
- GAUGE TELEMARCK : pneumatic gauge with Telemark adjustment range 0,8 to 3 mm.



## JAUGES

Accessories

Designation	Type	Ref.
MECAMENSOR	mechanical	<b>149B5032</b>
TELEMARCK	pneumatic	<b>149B5340</b>

### Technical features

Operating temperature	Maxi. 70 °C
-----------------------	-------------

The descriptions and photographs contained in this product specification sheet are supplied by way of information only and are not binding.

Socla reserves the right to carry out any technical and design improvements to its products without prior notice. Warranty : All sales and contracts for sale are expressly conditioned on the buyer's assent to Socla terms and conditions found on its website at [www.socla.com](http://www.socla.com). Socla hereby objects to any term, different from or additional to Socla terms, contained in any buyer communication in any form, unless agreed to in a writing signed by an officer of Socla.

# Socla

A WATTS Brand

**Socla sas**

365 rue du Lieutenant Putier • 71530 Virey-Le-Grand • France

Tel. +33 03 85 97 42 00 • Fax +33 03 85 97 42 42

[contact@wattswater.com](mailto:contact@wattswater.com) • [www.socla.com](http://www.socla.com)

ISO 9001 version 2015 / ISO 18001